

Friends of



Strouds Run State Park

A most magical and peaceful place . . .
Mimi Morrison, local outings guide

Supporting and protecting
one of Ohio's most
beautiful state parks.

**Friends of
Strouds Run State Park**
PO Box 514, Athens, OH 45701
www.friendsofstroudsrun.org

brochure version of 09 August 2019

Who We Are

Friends of Strouds Run State Park is a public-service citizen organization with nonprofit 501 (c) (3) IRS status.

User groups involved with us include hikers, bicyclists, equestrians, birders, paddlers, hunters, and all who enjoy a natural setting.

Members are those committed to preserving the park's environment, history and culture – and everyone who just loves Strouds Run!

Vision Statement for Strouds Run:

A healthy lake surrounded by unparalleled beauty from the lush natural landscape of old-growth and young forests. Strouds Run State Park provides a setting that enhances the educational and recreational growth of the citizens of Southeast Ohio and beyond. An associated nature center and recreational venues facilitate the transfer of knowledge and provide a venue for the development of an appreciation for the importance of discovery and the healthy

Friends Goals

- ▶ To preserve and protect our state park
- ▶ To promote and support recreational and educational activities at the park
- ▶ To increase public awareness and appreciation of the park

How to Get Involved

1. Become a member (next panel)
2. Volunteer time to projects/events
3. Donate or raise funds for Friends
4. Give of your time, expertise and talents on committees
5. Spread the word!

Name: _____

Address: _____

Phone: _____

Cell: _____

Email: _____

Minimum membership is \$10. Larger donations are very welcome and will help us with our work!

Amount enclosed:

Interests:

- ☐ Member relations
- ☐ Public information
- ☐ Trail construction & maintenance
- ☐ Fundraising
- ☐ Grant writing
- ☐ Other (or comments):

Mail to:

**Friends of Strouds Run State Park
PO Box 514, Athens, OH 45701**

Directions to Strouds Run State Park

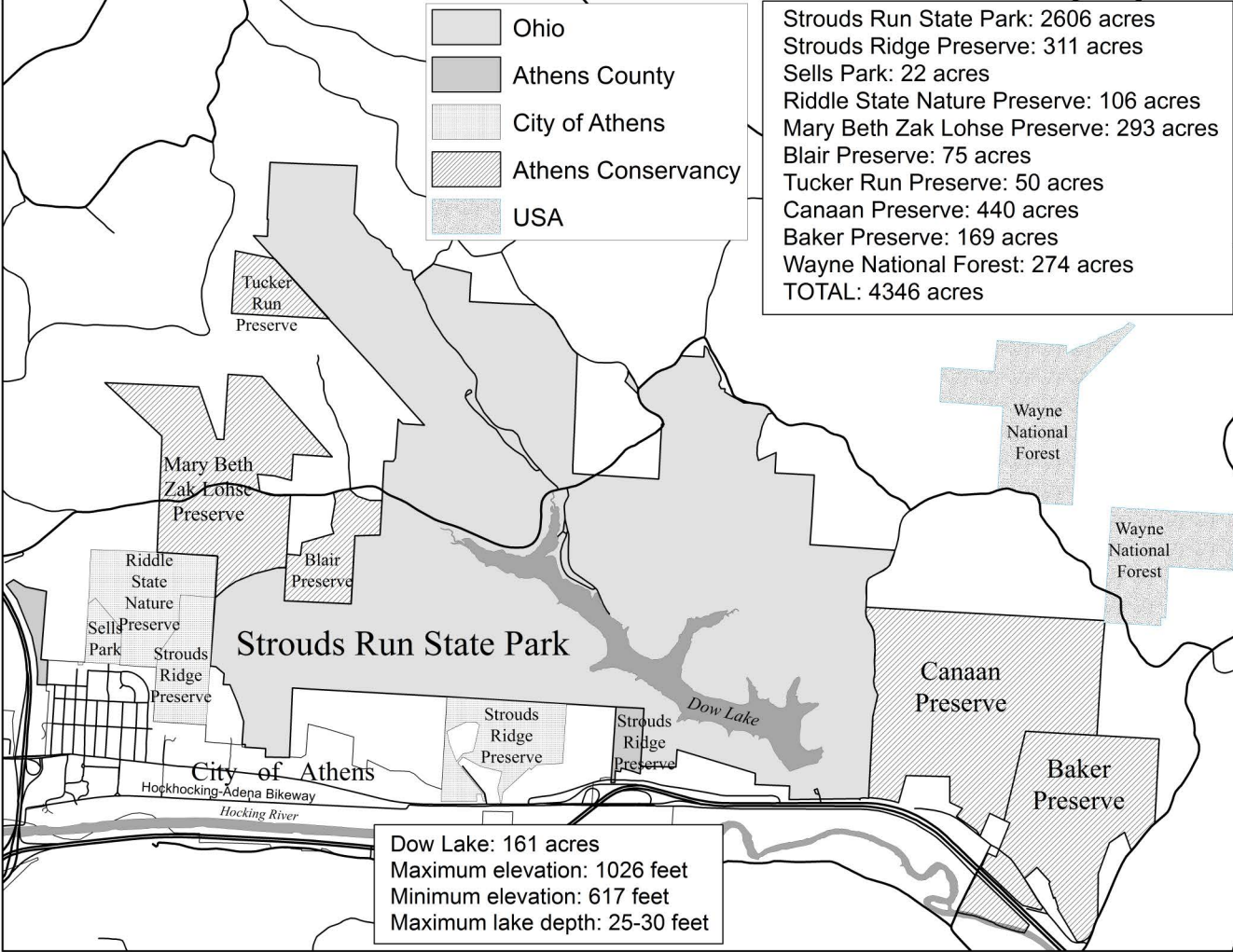
From Columbus: Take US-33 east to Athens and follow general directions.
From Parkersburg: Take US-50 west to Athens, take US-33 west, and follow general directions.
From Cincinnati: Take OH-32 east to Athens, take US-33 west, and follow general directions.

General Directions

From US-33, at Athens take the OH-550 (Columbus Road) exit, and turn right off the ramp onto Columbus Road. Go to the stoplight at the top of the hill and turn left on Lancaster Street, which becomes Columbia Avenue after one block. Take Columbia across the highway overpass and turn right at the stop sign onto Strouds Run Road, which will take you into the park.



www.friendsofstroudsrun.org



Strouds Run State Park is located in the unglaciated Allegheny Plateau of southeastern Ohio. the area comprises steep-sided, rugged hills, deeply-cut valleys, hillside bluffs, and dense forest. Much of the park's forest is mature forest, with a significant old-growth forest nearby in Riddle State Nature Preserve.

Park Contact Information

Detailed information about services and activities connected with the park can be obtained by:

Calling: 740.767.3570
Visiting: <http://parks.ohiodnr.gov/stroudsrun>
Writing: c/o Burr Oak State Park
1022 Burr Oak Lodge
Glouster, OH 45732